

# LINEAR MOTION 9

# L-M9-U

UNLIT

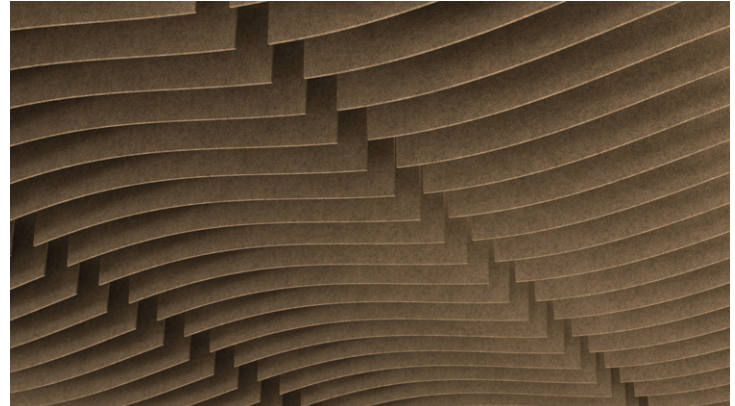
DATE	PROJECT	CATALOG #	FIXTURE TYPE
------	---------	-----------	--------------

## OVERVIEW

MOTION 9 introduces organic shapes that bring a sense of softness and dynamic interest to any space. Available in three profiles—FACET, SARGASSO, and BREEZE—it features a fluid design language that allows for seamless customization. Its versatility makes it ideal for use in Embedded Arrays™, where it integrates effortlessly with other SABIN systems to create bespoke layouts.

## QUICK FACTS

- Array sizes up to 98 FT length and 98 FT width
- Spacing between baffles 4, 6, 8, or 12 IN from center
- Custom designed Embedded Array™ with SABIN pendants
- Field adjustable suspension points
- NRC rating of .95+



## SPECIFICATIONS

SERIES	CONFIGURATION	LENGTH <sup>1</sup>	WIDTH <sup>1</sup>	HEIGHT <sup>1</sup>	SPACING	FELT COLOR (9 MM)
L-M9-U	FAC FACET SAR SARGASSO BRZ BREEZE	16' (5M) 33' (10M) 49' (15M) 66' (20M) 82' (25M) 98' (30M) CL___ <sup>2</sup>	16' (5M) 33' (10M) 49' (15M) 66' (20M) 82' (25M) 98' (30M) CW___ <sup>3</sup>	8" (200 MM) 11" (285 MM) 16" (400 MM) CH___ <sup>4</sup>	4OC 4" (100 MM) ON CENTER 6OC 6" (150 MM) ON CENTER 8OC 8" (200 MM) ON CENTER 12OC 12" (300 MM) ON CENTER	9___ REPLACE "___" WITH DESIRED COLOR CODE FROM SWATCHES
<b>MOUNTING</b>					<b>FACTORY OPTIONS<sup>6</sup></b>	
AC___	60" AIRCRAFT CABLE + (COLOR CODE) <sup>5</sup>				CSL___	CUSTOM SUSPENSION LENGTH 24" - 120" <sup>7</sup>
ST___	60" STRAP + (COLOR CODE) <sup>5</sup>				SGC	STANDARD GRID CLIP
TRD	3/8" THREADED ROD				TGC	REGULAR GRID CLIP
DTS	DIRECT TO STRUT				CT___	CUSTOM THREAD + (COLOR CODE) <sup>5</sup>
DTG	DIRECT TO GRID				2CP	INCLUDE 2" CANOPIES <sup>8</sup>
					BABA	BABA COMPLIANT

<sup>1</sup> IMPERIAL DIMENSIONS ARE NOMINAL. ACTUAL DIMENSIONS ARE METRIC.  
<sup>2</sup> CUSTOM LENGTHS AVAILABLE BETWEEN 8' - 100' (2M - 30M).  
<sup>3</sup> CUSTOM WIDTH AVAILABLE BETWEEN 8' - 100' (2M - 30M).  
<sup>4</sup> CUSTOM HEIGHTS AVAILABLE BETWEEN 8" - 36" (200-925 MM).

<sup>5</sup> REPLACE "\_\_\_" WITH DESIRED COLOR CODE FROM SWATCHES.  
<sup>6</sup> LEAVE BLANK IF NOT APPLICABLE. STRING TOGETHER MULTIPLE SELECTIONS.  
<sup>7</sup> REPLACE "\_\_\_" WITH LENGTH OF DESIRED SUSPENSION.  
<sup>8</sup> CANOPIES ARE ONLY PROVIDED UPON REQUEST.

EXAMPLE CATALOG #: L-M9-U-FAC-98(30)-98(30)-11(285)-40C-9JD-ACBLK



© 2025 SABIN LLC. ALL RIGHTS RESERVED.  
 CUSTOMIZE AT SABIN.BUILD  
 DATE REVISED 09.17.2025



# COLOR SWATCHES

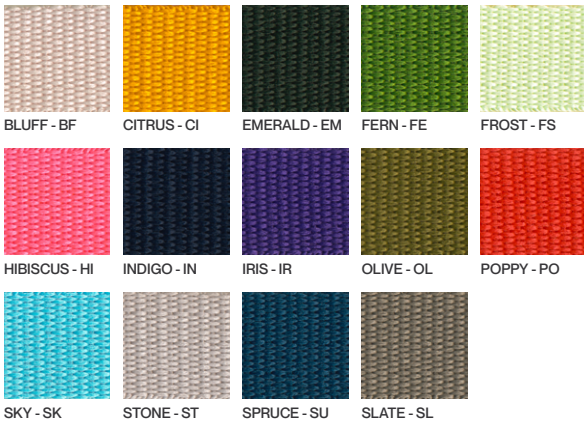
# L-M9-U

DATE	PROJECT	CATALOG #	FIXTURE TYPE
------	---------	-----------	--------------

## FELT



## SUSPENSION STRAP



## AIRCRAFT CABLE



## THREAD



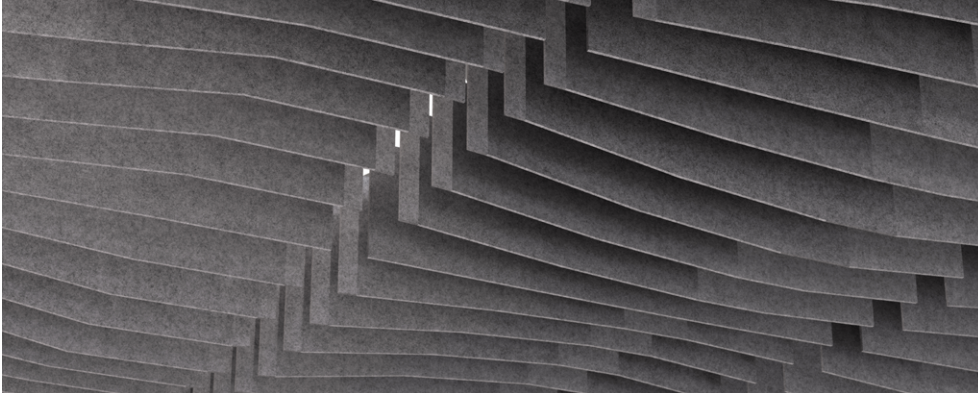
# LINEAR MOTION 9

UNLIT

# L-M9-U

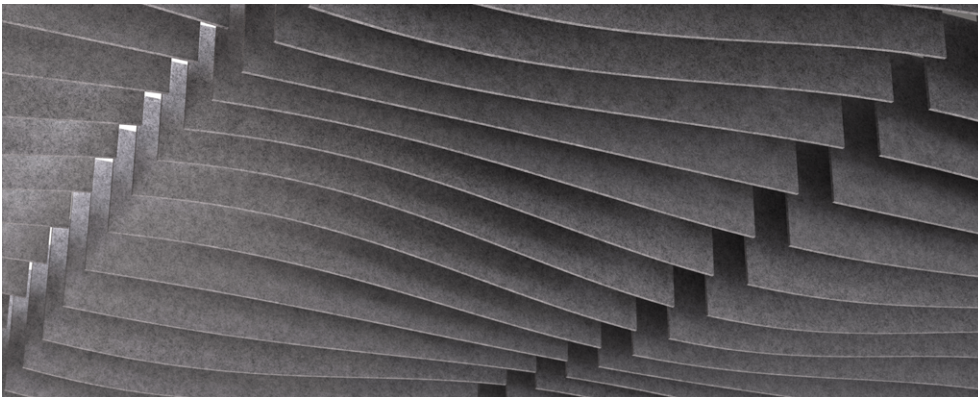
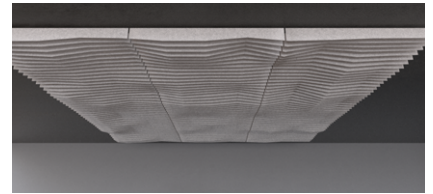
DATE	PROJECT	CATALOG #	FIXTURE TYPE

## MOTION 9 STYLES



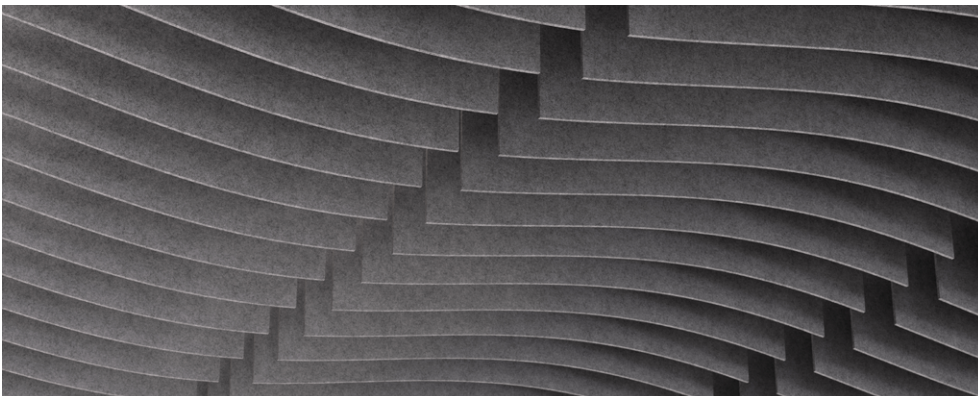
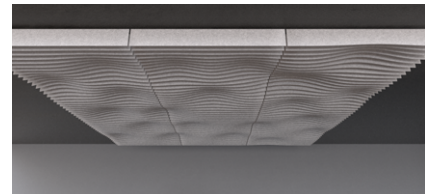
### FACET

Facet is defined by its hard edges and angularity, pulling inspiration from the rugged terrains and mountainous biomes. This geometry lends itself to clean, exact, and decisive aesthetics.



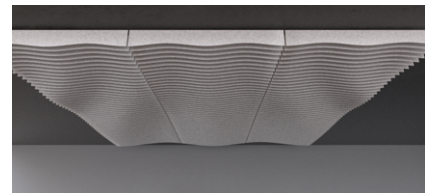
### SARGASSO

Sargasso transforms your ceiling into a comfortably organic canvas, evoking feelings of serenity with its gently rolling form.



### BREEZE

Breeze expands across the ceiling in smooth, curvilinear bands to bring a sense of movement to your space. As these bands radiate outward, they create an energy palpable to those who fill the space.



# SABIN

© 2025 SABIN LLC. ALL RIGHTS RESERVED.  
CUSTOMIZE AT SABIN.BUILD  
DATE REVISED 09.17.2025

MADE  
IN THE  
USA

5  
YEAR  
WARRANTY

♻️  
PET

# 3

# ACOUSTIC PERFORMANCE

# L-M9-U

## TECHNICAL DATA

DATE	PROJECT	CATALOG #	FIXTURE TYPE
------	---------	-----------	--------------

## LINEAR MOTION 9

ALL SABIN PRODUCTS ARE SUBJECT TO ACOUSTIC TESTING. PERFORMANCE VALUES WILL VARY BASED ON INSTALLATION FACTORS SUCH AS DENSITY AND MOUNTING HEIGHT.

**SABINS** A SABIN IS A UNIT OF SOUND ABSORPTION DEFINED AS THE AMOUNT OF SOUND ABSORBED BY ONE SQUARE FOOT OF A PERFECT ABSORBER. IT WAS INITIALLY CONCEIVED AS THE EQUIVALENT OF 1 SQUARE FOOT OF OPEN WINDOW, REFLECTING NO SOUND BACK INTO THE INTERIOR. SABINS ARE USED TO EXPRESS THE TOTAL EFFECTIVE ABSORPTION FOR THE INTERIOR OF A ROOM. THIS CHART INDICATES AVERAGE SABINS PER UNIT AT THE NOTED FREQUENCIES WHICH REPRESENT THE TYPICAL RANGE OF HUMAN SPEECH OF 200-2500 HZ.

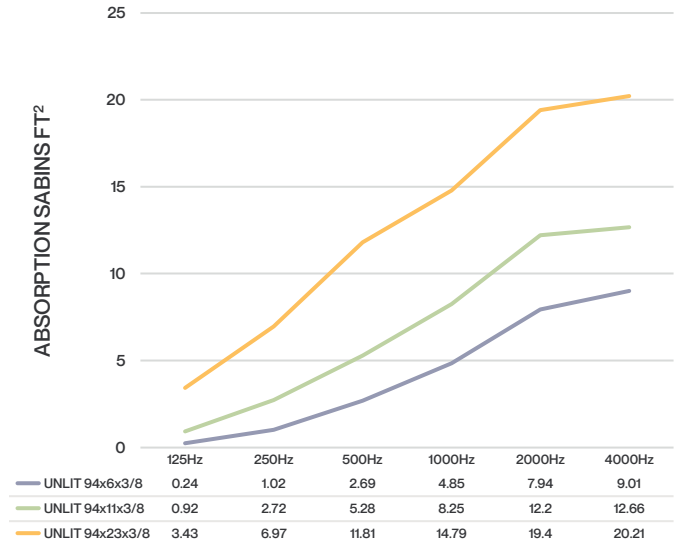
**NRC** NOISE REDUCTION COEFFICIENT (NRC) IS A SINGLE NUMBER VALUE RANGING FROM 0.0 TO 1.0 THAT DESCRIBES THE AVERAGE SOUND ABSORPTION PERFORMANCE OF A MATERIAL. AN NRC OF 0.0 INDICATES THE OBJECT DOES NOT ABSORB MID-FREQUENCY SOUND ENERGY, BUT REFLECTS IT. AN NRC OF 1.0 INDICATES THAT THE SOUND ABSORPTION PERFORMANCE OF THE MATERIAL IS EQUAL TO ITS SURFACE AREA (MEASURED IN UNITS SABIN), OR CONCEPTUALLY 100% SOUND ABSORPTION.

PROJECTED NRC = .95

TOTAL SOUND ABSORPTION WILL VARY BASED ON DESIGNED PRODUCT CONFIGURATION. SABIN TESTS ALL PRODUCTS IN MULTIPLE CONFIGURATIONS. PLEASE CONTACT SABIN OR YOUR LOCAL AGENT FOR MORE INFORMATION.

## LINEAR MOTION 9

ACOUSTIC PERFORMANCE



DATE	PROJECT	CATALOG #	FIXTURE TYPE

## ACOUSTIC MATERIAL

Our PET (polyester) felt panels contain minimum 60% post-consumer recycled polyester staple fiber. It is moisture resistant, fire rated, recyclable, and an outstanding absorber of acoustic energy.

- Fire retardant: ASTM E84 Class A, EN13501 Class B
- Construction: 100% polyester fiber (PET)
- Material certifications: OEKO-TEX® Standard 100, SCS Recycled Content, and Declare

## CARE

Acoustic PET felt: Remove dust with compressed air, a vacuum or lint roller. Aluminum & polymer components: Remove dust and debris with a clean, dry, lint-free cloth.

## CERTIFICATES/LISTING

This product is ETL listed and tested to meet UL standards for lit configurations. It complies with NEC and ANSI/NFPA 70 requirements, is RoHS compliant, and rated IP20 for use in dry, indoor locations only. 90 CRI configurations also meet Title 24 JA8-2016 requirements. Additionally, this product is GREENGUARD Gold certified and holds Declare, OEKO-TEX® Standard 100, and SCS Recycled Content certifications.

## CONSTRUCTION

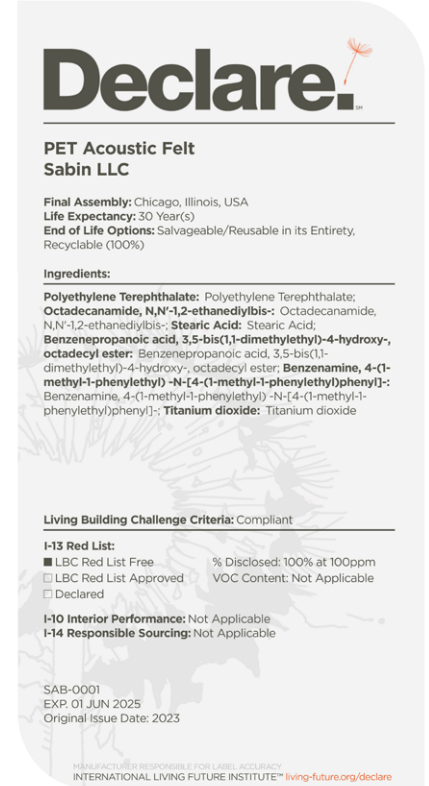
Acoustic luminaire comprised of ≥ 60% recycled PET material utilizing sewn construction to maximize strength, durability, and sound absorbency.

## MOUNTING

Suspended by various methods including 1/16" aircraft cable, straps, grid clips or 3/8" threaded rod (adapters provided, threaded rod by others). Aircraft cable is available in precut lengths of 60" (1524 MM) or custom length from 24" (600 MM) to 120" (3048 MM). For lit units, fabric-covered power cord is provided along with a 5" (127 MM) feed canopy.

## WARRANTY

Fixture rated for operation in conditioned environments up to 77°F (25°C). Fixture is warranted to be free from defects and/or failure under normal Use and proper storage for five (5) years from date of shipment.



CONSULT FACTORY FOR SPECIFIC PRODUCT CONFIGURATIONS.

# SABIN

© 2024 SABIN LLC. ALL RIGHTS RESERVED.  
CUSTOMIZE AT SABIN.BUILD  
DATE REVISED 09.17.2025

