

DATE	PROJECT	CATALOG #	FIXTURE TYPE
------	---------	-----------	--------------

OVERVIEW

TRI is versatile and dynamic, featuring a unique triangular form with balanced rounded corners, ideal for lobbies, hallways, and transitional active spaces. It offers tailored solutions to exceed lighting and acoustic needs with customizable 1 IN increments between 24 - 47 IN in diameter and heights up to 100 IN.

QUICK FACTS

- Custom diameters between 24 - 47 IN and heights between 12 - 100 IN
- Custom suspension length 24 - 120 IN
- Mount direct to strut, direct to grid, with threaded rod, straps, or by aircraft cable
- NRC rating of .95



SPECIFICATIONS

SERIES	CIRCUMSCRIBED DIAMETER ^{1,2}	HEIGHT ¹	
TRI-U	24" (600 MM) 35" (900 MM) 47" (1200 MM) CD ___ ³	12" (300 MM) 19" (475 MM) 24" (600 MM) 33" (850 MM) 53" (1350 MM) 100" (2550 MM) CH ___ ⁴	
EXTERIOR FELT (1.5 MM)		INTERIOR FELT (1.5 MM)	
15 ___ REPLACE "___" WITH DESIRED COLOR CODE FROM SWATCHES		15 ___ REPLACE "___" WITH DESIRED COLOR CODE FROM SWATCHES	
SUSPENSION TYPE		CEILING TYPE	CANOPY ⁷
AC ___ 60" AIRCRAFT CABLE + (COLOR CODE) ⁵ ST ___ 60" STRAP + (COLOR CODE) ⁵ TRD 3/8" THREADED ROD DT DIRECT TO		HC HARD CEILING ⁶ ST STRUT SG STANDARD GRID TG TEGULAR GRID	NC NO CANOPIES RWH ROUND WHITE RBK ROUND BLACK SWH SQUARE WHITE SBK SQUARE BLACK
		PIPING	
		NP NO PIPING P ___ REPLACE "___" WITH DESIRED COLOR CODE FROM SWATCHES	
		FACTORY OPTIONS ⁸	
		CSL ___ CUSTOM SUSPENSION LENGTH 24" - 120" ⁹ CT ___ CUSTOM THREAD + (COLOR CODE) ⁵ BABA BABA REQUIRED	

1 IMPERIAL DIMENSIONS ARE NOMINAL. ACTUAL DIMENSIONS ARE METRIC.
2 SEE DIMENSIONED DRAWINGS FOR ILLUSTRATION OF CIRCUMSCRIBED DIAMETER.
3 CUSTOM DIAMETER AVAILABLE BETWEEN 24" - 47" (600 - 1200 MM).
4 CUSTOM HEIGHTS AVAILABLE BETWEEN 12" - 100" (300 - 2550 MM).
5 REPLACE "___" WITH DESIRED COLOR CODE FROM SWATCHES.

6 NOT AVAILABLE IN DIRECT TO SUSPENSION TYPE.
7 OPTIONAL 2IN CANOPIES CAN BE INCLUDED FOR CABLE, STRAP, OR GRID SUSPENSION.
8 LEAVE BLANK IF NOT APPLICABLE. STRING TOGETHER MULTIPLE SELECTIONS.
9 REPLACE "___" WITH LENGTH OF DESIRED SUSPENSION.

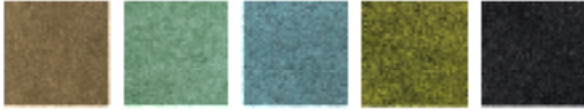
EXAMPLE CATALOG #: TRI-U-47(1200)-19(475)-15JD-15FL-NP-ACBLK-HC-NC

COLOR SWATCHES

FELT



BEETROOT - BT BISQUE - BS CANARY - CN FLINT - FL GULF - GF



HAZEL - HZ JADE - JD MERCURY - MY MOSS - MO OBSIDIAN - OB



PINE - PN PUMICE - PU QUARRY - QY SAFFRON - SF SAND - SD

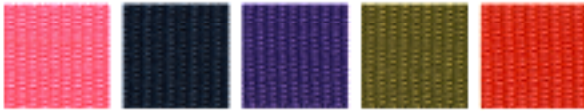


SAPPHIRE - SP SENNA - SI WISTERIA - WS

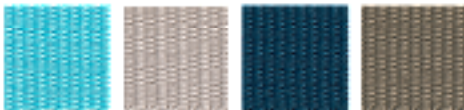
SUSPENSION STRAP



BLUFF - BF CITRUS - CI EMERALD - EM FERN - FE FROST - FS

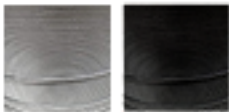


HIIBISCUS - HB INDIIGO - IN IRIS - IR OLIVE - OL POPPY - PO



SKY - SK STONE - ST SPRUCE - SU SLATE - SL

AIRCRAFT CABLE



SILVER - SLV BLACK - BLK

PIPING



AZURE - AZ BLUFF - BF CITRUS - CI CLAY - CY CURRANT - CN DUNE - DU



EMERALD - EM FERN - FE FROST - FS HIIBISCUS - HI INDIIGO - IN IRIS - IR

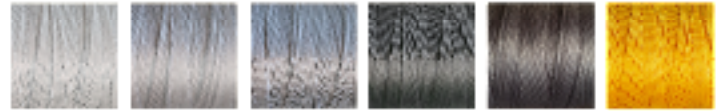


LIME - LM OLIVE - OL ONYX - OK POPPY - PO SAGE - SG SHELL - SH

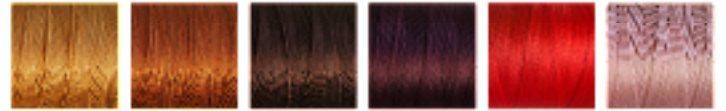


SKY - SK SLATE - SL SPRUCE - SU STONE - ST TIMBER - TM WHITE - WH

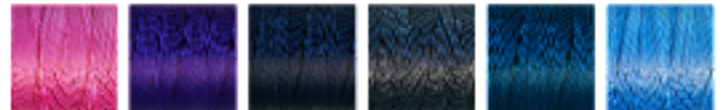
THREAD



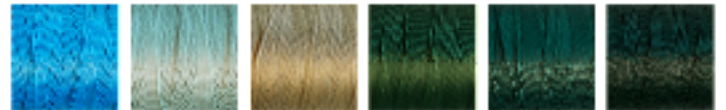
411 321 7015 415 418 0064



177 983 175 8834 904 837



8188 7377 827 1452 405 7483



8470 1065 380 842 8273 848



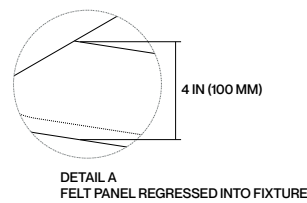
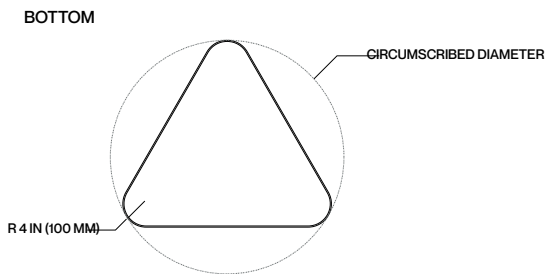
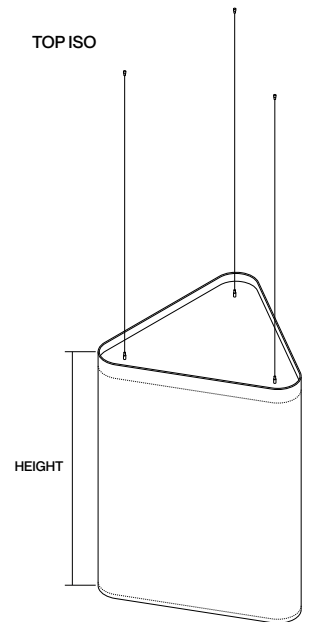
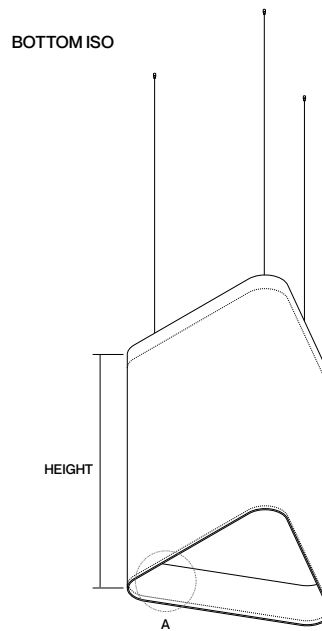
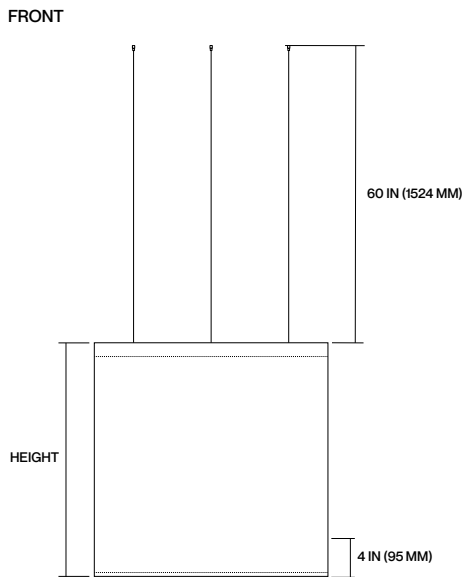
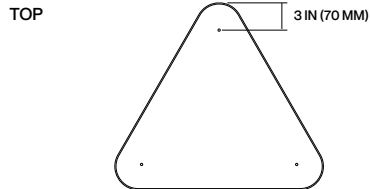
4000

Colors are subject to slight variation from your screen or paper to the finished product. Contact the factory for additional color options.

DIMENSIONS

TRI-U

DATE	PROJECT	CATALOG #	FIXTURE TYPE
------	---------	-----------	--------------



- 1 IMPERIAL DIMENSIONS ARE NOMINAL. ACTUAL DIMENSIONS ARE METRIC.
- 2 ALL STANDARD DIMENSIONS ARE ECO-CONSCIOUS, MAXIMIZING MATERIAL USE AND MINIMIZING WASTE. CUSTOM DIMENSIONS RESULT IN EXCESS MATERIAL WASTE.
- 3 PLEASE CONSULT THE FACTORY FOR WEIGHTS SPECIFIC TO CONFIGURATION.

ACOUSTIC PERFORMANCE

TRI-U

TECHNICAL DATA

DATE	PROJECT	CATALOG #	FIXTURE TYPE
------	---------	-----------	--------------

TRI

ALL SABIN PRODUCTS ARE SUBJECT TO ACOUSTIC TESTING. PERFORMANCE VALUES WILL VARY BASED ON INSTALLATION FACTORS SUCH AS DENSITY AND MOUNTING HEIGHT.

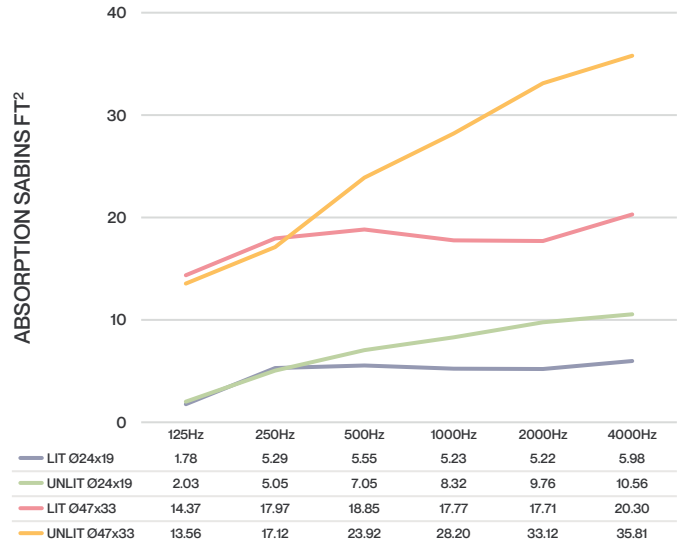
SABINS A SABIN IS A UNIT OF SOUND ABSORPTION DEFINED AS THE AMOUNT OF SOUND ABSORBED BY ONE SQUARE FOOT OF A PERFECT ABSORBER. IT WAS INITIALLY CONCEIVED AS THE EQUIVALENT OF 1 SQUARE FOOT OF OPEN WINDOW, REFLECTING NO SOUND BACK INTO THE INTERIOR. SABINS ARE USED TO EXPRESS THE TOTAL EFFECTIVE ABSORPTION FOR THE INTERIOR OF A ROOM. THIS CHART INDICATES AVERAGE SABINS PER UNIT AT THE NOTED FREQUENCIES WHICH REPRESENT THE TYPICAL RANGE OF HUMAN SPEECH OF 200-2500 HZ.

NRC NOISE REDUCTION COEFFICIENT (NRC) IS A SINGLE NUMBER VALUE RANGING FROM 0.0 TO 1.0 THAT DESCRIBES THE AVERAGE SOUND ABSORPTION PERFORMANCE OF A MATERIAL. AN NRC OF 0.0 INDICATES THE OBJECT DOES NOT ABSORB MID-FREQUENCY SOUND ENERGY, BUT REFLECTS IT. AN NRC OF 1.0 INDICATES THAT THE SOUND ABSORPTION PERFORMANCE OF THE MATERIAL IS EQUAL TO ITS SURFACE AREA (MEASURED IN UNITS SABIN), OR CONCEPTUALLY 100% SOUND ABSORPTION.

PROJECTED NRC = .95

TOTAL SOUND ABSORPTION WILL VARY BASED ON DESIGNED PRODUCT CONFIGURATION. SABIN TESTS ALL PRODUCTS IN MULTIPLE CONFIGURATIONS. PLEASE CONTACT SABIN OR YOUR LOCAL AGENT FOR MORE INFORMATION.

TRI
ACOUSTIC PERFORMANCE



DATE	PROJECT	CATALOG #	FIXTURE TYPE

ACOUSTIC MATERIAL

Our PET (polyester) felt panels contain minimum 60% post-consumer recycled polyester staple fiber. It is moisture resistant, fire rated, recyclable, and an outstanding absorber of acoustic energy.

- Fire retardant: ASTM E84 Class A, EN13501 Class B
- Construction: 100% polyester fiber (PET)
- Material certifications: OEKO-TEX® Standard 100, SCS Recycled Content, and Declare

CARE

Acoustic PET felt: Remove dust with compressed air, a vacuum or lint roller. Aluminum & polymer components: Remove dust and debris with a clean, dry, lint-free cloth.

CERTIFICATES/LISTING

This product is ETL listed and tested to meet UL standards for lit configurations. It complies with NEC and ANSI/NFPA 70 requirements, is RoHS compliant, and rated IP20 for use in dry, indoor locations only. 90 CRI configurations also meet Title 24 JA8-2016 requirements. Additionally, this product is GREENGUARD Gold certified and holds Declare, OEKO-TEX® Standard 100, and SCS Recycled Content certifications.

CONSTRUCTION

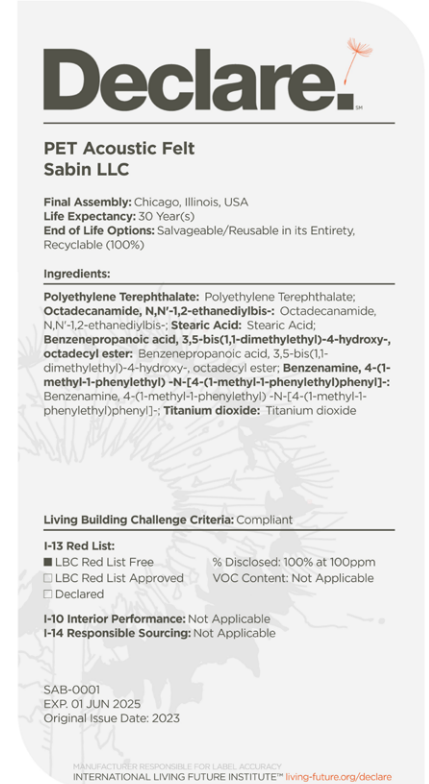
Acoustic luminaire comprised of ≥ 60% recycled PET material utilizing sewn construction to maximize strength, durability, and sound absorbency.

MOUNTING

Suspended by various methods including 1/16" aircraft cable, straps, grid clips or 3/8" threaded rod (adapters provided, threaded rod by others). Aircraft cable is available in pre-cut lengths of 60" (1524 MM) or custom length from 24" (600 MM) to 120" (3048 MM). For lit units, fabric-covered power cord is provided along with a 5" (127 MM) feed canopy.

WARRANTY

Fixture rated for operation in conditioned environments up to 77°F (25°C). Fixture is warranted to be free from defects and/or failure under normal Use and proper storage for five (5) years from date of shipment.



CONSULT FACTORY FOR SPECIFIC PRODUCT CONFIGURATIONS.